

Do not attempt the installation alone. We recommend wearing goggles and gloves when installing the door.

Do not remove the transport bar that is attached under the door until the installation is completed. If you have to store the

sauna door for a long period, place the packaging horizontally.

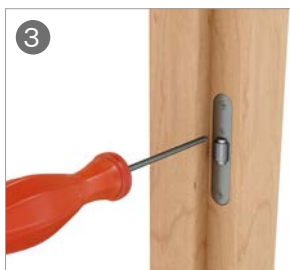
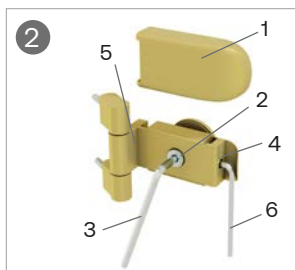
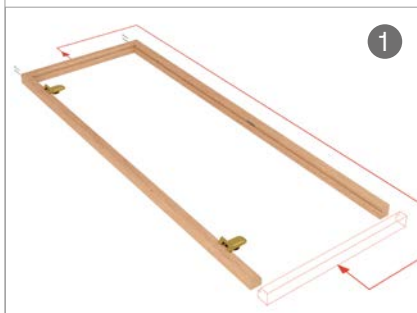
Please check the quality and condition of the product before installation, and do not install if it is damaged or defective.

1. INSTALLATION PROCEDURE

1. Place the door on a horizontal surface so that the glass opens upwards and open the package.
2. To change the opening direction of the door, change the location of the horizontal jamb by removing the 4 screws and placing it at the opposite end of the door (Figure 1).
3. Remove the plastic covers from the hinges, then loosen the bolts and remove the glass from the door frame (Figure 2).
4. Install the door frame in the wall opening using screws (e.g. 5 x 80 mm, not included) and seal the gap with fireproof construction foam or wool.
5. Install the glass and then tighten the hinge bolts (Figure 2).
6. Make sure that the glass opens and closes freely and that the gap between the glass and the jamb is even. If necessary, adjust the jamb mounting screws or hinges.
7. Install the handle (see figure, "Installing the handle")
8. Adjust the roller-lock to ensure that the door opens easily and that the glass doesn't lock too tightly (Figure 3).
9. Install the plastic covers on the hinges and the wooden caps on the jamb screws.
10. Install the door trim (not included).

ADJUSTING THE HINGES

1. The maximum adjustment range is 5 mm. You will need 3 mm and 5 mm hexagon keys for adjusting the hinges (not included).
2. Remove the plastic covers from the hinges (1).
3. Loosen the fixing screws (2) one turn (do not remove the glass).



Installation Guide

Sauna Doors

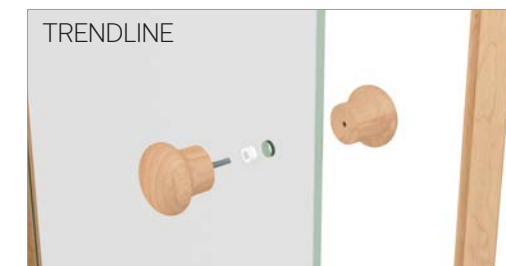
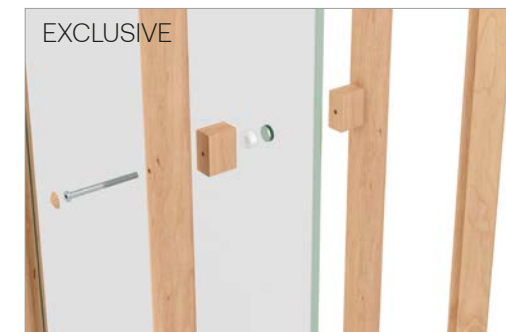
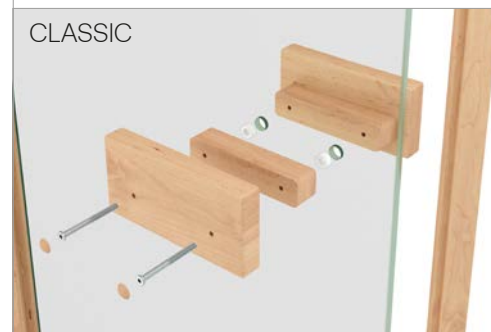
EN

4. To move the glass to the left or right, turn the screws (4 and 5) as required. If one screw is turned counterclockwise, the other must be turned clockwise. Make

sure both screws are tight when you have completed this step.

5. Tighten the fixing screws (2).

INSTALLING THE HANDLE



PLEASE HANDLE THE DOOR WITH CARE!
Tempered glass can shatter into small pieces if its corners or edges come into contact with a hard surface.

2. MAINTAINING THE DOOR

Before using the sauna, we recommend treating the wooden surfaces of the door with a sauna wood surface treatment agent.

Check the condition of the fastenings for the hinges and roller-lock regularly. If necessary, tighten the hinge bolts or adjust the lock.

Avoid excessive moisture and constant water flow around the jamb.

Clean the door glass regularly using a glass cleaner. Avoid using abrasive cleaners that can damage the glass surface.

